

2,6-Dibromo-4-butylanilinium chloride

Liang Zhao* and Li-Ping Feng

Department of Chemical & Environmental Engineering, Anyang Institute of Technology, Anyang 455000, People's Republic of China
 Correspondence e-mail: ayitzhao@yahoo.com.cn

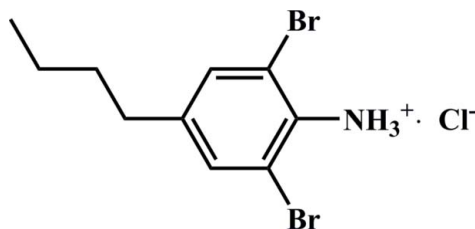
Received 12 November 2010; accepted 17 November 2010

Key indicators: single-crystal X-ray study; $T = 298$ K; mean $\sigma(\text{C}-\text{C}) = 0.012$ Å; R factor = 0.064; wR factor = 0.159; data-to-parameter ratio = 23.1.

In the crystal structure of the title salt, $\text{C}_{10}\text{H}_{14}\text{Br}_2\text{N}^+\cdot\text{Cl}^-$, the organic cations and chloride anions are linked into one-dimensional chains parallel to the a axis by $\text{N}-\text{H}\cdots\text{Cl}$ and $\text{N}-\text{H}\cdots\text{Br}$ hydrogen bonds.

Related literature

For general background to supramolecular self-assembly chemistry, see: Lehn Lehn (1995); Scheiner (1997).



Experimental

Crystal data

$\text{C}_{10}\text{H}_{14}\text{Br}_2\text{N}^+\cdot\text{Cl}^-$
 $M_r = 343.49$
 Triclinic, $P\bar{1}$
 $a = 4.9785$ (10) Å
 $b = 8.7844$ (18) Å

$c = 14.898$ (3) Å
 $\alpha = 86.29$ (3)°
 $\beta = 87.58$ (3)°
 $\gamma = 87.17$ (3)°
 $V = 648.9$ (2) Å³

$Z = 2$
 Mo $K\alpha$ radiation
 $\mu = 6.42$ mm⁻¹

$T = 298$ K
 $0.10 \times 0.03 \times 0.03$ mm

Data collection

Rigaku Mercury2 diffractometer
 Absorption correction: multi-scan
 (*CrystalClear*; Rigaku, 2005)
 $T_{\min} = 0.910$, $T_{\max} = 1.000$

6685 measured reflections
 2959 independent reflections
 1843 reflections with $I > 2\sigma(I)$
 $R_{\text{int}} = 0.073$

Refinement

$R[F^2 > 2\sigma(F^2)] = 0.064$
 $wR(F^2) = 0.159$
 $S = 1.04$
 2959 reflections
 128 parameters

7 restraints
 H-atom parameters constrained
 $\Delta\rho_{\max} = 0.74$ e Å⁻³
 $\Delta\rho_{\min} = -0.59$ e Å⁻³

Table 1

Hydrogen-bond geometry (Å, °).

$D-\text{H}\cdots A$	$D-\text{H}$	$\text{H}\cdots A$	$D\cdots A$	$D-\text{H}\cdots A$
$\text{N1}-\text{H1C}\cdots\text{Cl1}^{\text{i}}$	0.89	2.59	3.240 (5)	130
$\text{N1}-\text{H1D}\cdots\text{Cl1}^{\text{ii}}$	0.89	2.68	3.136 (5)	113
$\text{N1}-\text{H1C}\cdots\text{Br1}^{\text{iii}}$	0.89	2.82	3.517 (5)	135
$\text{N1}-\text{H1B}\cdots\text{Br1}$	0.89	2.51	3.094 (5)	124
$\text{N1}-\text{H1B}\cdots\text{Cl1}$	0.89	2.72	3.212 (6)	116

Symmetry codes: (i) $-x, -y, -z$; (ii) $-x + 1, -y, -z$; (iii) $x - 1, y, z$.

Data collection: *CrystalClear* (Rigaku, 2005); cell refinement: *CrystalClear*; data reduction: *CrystalClear*; program(s) used to solve structure: *SHELXS97* (Sheldrick, 2008); program(s) used to refine structure: *SHELXL97* (Sheldrick, 2008); molecular graphics: *SHELXTL* (Sheldrick, 2008); software used to prepare material for publication: *SHELXTL*.

This work was supported by a School start-up grant to LZ.

Supplementary data and figures for this paper are available from the IUCr electronic archives (Reference: RZ2526).

References

- Lehn, J. M. (1995). In *Supramolecular Chemistry: Concepts and Perspectives*. Weinheim: VCH.
 Rigaku (2005). *CrystalClear*. Rigaku Corporation, Tokyo, Japan.
 Scheiner, S. (1997). *Hydrogen Bonding*. New York: Oxford University Press.
 Sheldrick, G. M. (2008). *Acta Cryst.* **A64**, 112–122.

supplementary materials

Acta Cryst. (2010). E66, o3266 [doi:10.1107/S1600536810047811]

2,6-Dibromo-4-butylanilinium chloride

L. Zhao and L.-P. Feng

Comment

In recent years there has been a rapidly increasing interest in the construction of various kinds of supramolecular systems for understanding molecular self-assembly principles and for designing molecular recognition. A supramolecular system generally refers to an assembly of molecules which are not covalently connected but assembled by other weak intermolecular interactions, such as hydrogen bonds (Lehn, 1995; Scheiner, 1997). We report here the crystal structure of the title compound, 2,6-dibromo-4-butylanilinium chloride.

In the title compound (Fig.1), the butyl group is approximately orthogonal to the benzene plane, as indicated by the torsion angles C1—C6—C7—C8 and C5—C6—C7—C8 of 76.2 (11) and -102.7 (10)°, respectively. The Br1, Br2 and N1 substituents are displaced by 0.0842 (8), 0.1142 (8) and -0.005 (5) Å, respectively, with respect to the benzene ring. Bond lengths and angles lie within normal ranges. In the crystal structure, the organic cations and Cl⁻ anions are linked by N—H...Cl and N—H...Br hydrogen bonds (Table 1) to form one-dimensional chains along the *a* axis (Fig. 2).

Experimental

The title compound was purchased from ALFA AESAR. The compound (3 mmol) was dissolved in ethanol (20 ml) and the solution allowed to evaporate to obtain colourless block-shaped crystals of the title compound suitable for X-ray analysis.

Refinement

All H atoms were fixed geometrically and treated as riding, with C—H = 0.93-0.97 Å, N—H = 0.89 Å, and with $U_{\text{iso}}(\text{H}) = 1.2 U_{\text{iso}}(\text{C})$ or $1.5 U_{\text{iso}}(\text{C}, \text{N})$ for methyl and protonated amine H atoms. Restraints (SIMU and DELU) were applied to the U_{ij} parameters of atoms C9 and C10.

Figures

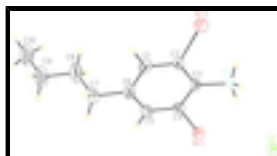


Fig. 1. A view of the title compound with the atomic numbering scheme. Displacement ellipsoids are drawn at the 30% probability level.

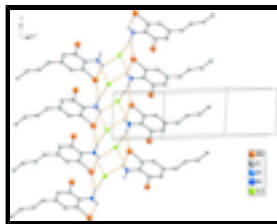


Fig. 2. Partial crystal packing of the title compound showing a chain formed along the *a* axis. H atoms not involved in hydrogen bonding (dashed lines) are omitted for clarity.

2,6-Dibromo-4-butylanilinium chloride

Crystal data

$C_{10}H_{14}Br_2N^+ \cdot Cl^-$

$M_r = 343.49$

Triclinic, $P\bar{1}$

Hall symbol: -P 1

$a = 4.9785$ (10) Å

$b = 8.7844$ (18) Å

$c = 14.898$ (3) Å

$\alpha = 86.29$ (3)°

$\beta = 87.58$ (3)°

$\gamma = 87.17$ (3)°

$V = 648.9$ (2) Å³

$Z = 2$

$F(000) = 336$

$D_x = 1.758$ Mg m⁻³

Mo $K\alpha$ radiation, $\lambda = 0.71073$ Å

Cell parameters from 2959 reflections

$\theta = 3.5$ – 27.5 °

$\mu = 6.42$ mm⁻¹

$T = 298$ K

Block, colourless

$0.10 \times 0.03 \times 0.03$ mm

Data collection

Rigaku Mercury2
diffractometer

Radiation source: fine-focus sealed tube
graphite

Detector resolution: 13.6612 pixels mm⁻¹

CCD profile fitting scans

Absorption correction: multi-scan
(*CrystalClear*; Rigaku, 2005)

$T_{\min} = 0.910$, $T_{\max} = 1.000$

6685 measured reflections

2959 independent reflections

1843 reflections with $I > 2\sigma(I)$

$R_{\text{int}} = 0.073$

$\theta_{\max} = 27.5$ °, $\theta_{\min} = 3.5$ °

$h = -6$ → 6

$k = -11$ → 11

$l = -19$ → 19

Refinement

Refinement on F^2

Least-squares matrix: full

$R[F^2 > 2\sigma(F^2)] = 0.064$

$wR(F^2) = 0.159$

$S = 1.04$

2959 reflections

128 parameters

7 restraints

Primary atom site location: structure-invariant direct methods

Secondary atom site location: difference Fourier map

Hydrogen site location: inferred from neighbouring sites

H-atom parameters constrained

$w = 1/[\sigma^2(F_o^2) + (0.0602P)^2 + 0.1405P]$

where $P = (F_o^2 + 2F_c^2)/3$

$(\Delta/\sigma)_{\max} < 0.001$

$\Delta\rho_{\max} = 0.74$ e Å⁻³

$\Delta\rho_{\min} = -0.59$ e Å⁻³

Special details

Geometry. All esds (except the esd in the dihedral angle between two l.s. planes) are estimated using the full covariance matrix. The cell esds are taken into account individually in the estimation of esds in distances, angles and torsion angles; correlations between esds in cell parameters are only used when they are defined by crystal symmetry. An approximate (isotropic) treatment of cell esds is used for estimating esds involving l.s. planes.

Refinement. Refinement of F^2 against ALL reflections. The weighted R-factor wR and goodness of fit S are based on F^2 , conventional R-factors R are based on F, with F set to zero for negative F^2 . The threshold expression of $F^2 > 2\text{sigma}(F^2)$ is used only for calculating R-factors(gt) etc. and is not relevant to the choice of reflections for refinement. R-factors based on F^2 are statistically about twice as large as those based on F, and R- factors based on ALL data will be even larger.

Fractional atomic coordinates and isotropic or equivalent isotropic displacement parameters (\AA^2)

	x	y	z	$U_{\text{iso}}^*/U_{\text{eq}}$
Br1	0.72826 (13)	0.30511 (8)	0.02752 (5)	0.0481 (3)
Br2	-0.07834 (15)	0.10595 (9)	0.28643 (5)	0.0591 (3)
C6	0.3280 (15)	0.5078 (8)	0.2416 (5)	0.0510 (18)
C3	0.3104 (12)	0.2297 (6)	0.1577 (4)	0.0380 (15)
C5	0.4948 (15)	0.4763 (7)	0.1683 (5)	0.0533 (19)
H5A	0.6159	0.5483	0.1463	0.064*
C2	0.1509 (13)	0.2581 (7)	0.2341 (5)	0.0399 (15)
N1	0.2929 (10)	0.0916 (5)	0.1091 (4)	0.0414 (13)
H1B	0.4105	0.0939	0.0624	0.062*
H1C	0.1273	0.0870	0.0895	0.062*
H1D	0.3304	0.0099	0.1457	0.062*
C4	0.4871 (13)	0.3411 (7)	0.1268 (4)	0.0426 (16)
C1	0.1564 (14)	0.3928 (8)	0.2748 (5)	0.0503 (18)
H1A	0.0447	0.4087	0.3253	0.060*
Cl1	0.2000 (3)	0.13452 (17)	-0.10326 (12)	0.0454 (4)
C7	0.332 (2)	0.6574 (9)	0.2856 (6)	0.074 (2)
H7A	0.4159	0.7317	0.2438	0.088*
H7B	0.1476	0.6943	0.2976	0.088*
C8	0.475 (2)	0.6474 (10)	0.3703 (8)	0.100 (3)
H8A	0.6534	0.6011	0.3588	0.120*
H8B	0.3813	0.5790	0.4131	0.120*
C9	0.507 (3)	0.7949 (12)	0.4139 (8)	0.121 (3)
H9A	0.5983	0.8641	0.3707	0.145*
H9B	0.3291	0.8403	0.4266	0.145*
C10	0.656 (3)	0.7844 (12)	0.4977 (8)	0.124 (3)
H10A	0.7705	0.8690	0.4979	0.185*
H10B	0.7628	0.6905	0.5015	0.185*
H10C	0.5302	0.7869	0.5484	0.185*

Atomic displacement parameters (\AA^2)

U^{11}	U^{22}	U^{33}	U^{12}	U^{13}	U^{23}
----------	----------	----------	----------	----------	----------

supplementary materials

Br1	0.0415 (4)	0.0531 (4)	0.0507 (5)	-0.0095 (3)	-0.0033 (3)	-0.0037 (3)
Br2	0.0639 (5)	0.0619 (5)	0.0529 (6)	-0.0181 (4)	0.0049 (4)	-0.0073 (4)
C6	0.065 (5)	0.044 (4)	0.045 (5)	-0.003 (4)	-0.011 (4)	-0.009 (3)
C3	0.042 (3)	0.030 (3)	0.044 (4)	-0.003 (3)	-0.012 (3)	-0.008 (3)
C5	0.064 (5)	0.034 (4)	0.063 (5)	-0.008 (3)	-0.019 (4)	0.002 (3)
C2	0.047 (4)	0.034 (3)	0.039 (4)	-0.004 (3)	-0.003 (3)	-0.002 (3)
N1	0.039 (3)	0.033 (3)	0.053 (4)	-0.007 (2)	-0.002 (3)	-0.010 (2)
C4	0.046 (4)	0.044 (4)	0.038 (4)	0.008 (3)	-0.012 (3)	0.001 (3)
C1	0.052 (4)	0.057 (4)	0.042 (4)	-0.001 (4)	0.003 (4)	-0.013 (3)
Cl1	0.0441 (9)	0.0400 (8)	0.0535 (11)	-0.0059 (7)	-0.0057 (8)	-0.0093 (7)
C7	0.109 (7)	0.044 (4)	0.070 (6)	-0.012 (4)	0.000 (6)	-0.013 (4)
C8	0.129 (8)	0.065 (6)	0.112 (10)	0.000 (6)	-0.036 (7)	-0.039 (6)
C9	0.181 (9)	0.080 (5)	0.111 (7)	-0.013 (6)	-0.050 (6)	-0.043 (5)
C10	0.183 (9)	0.083 (5)	0.113 (7)	-0.011 (6)	-0.049 (6)	-0.041 (5)

Geometric parameters (\AA , $^\circ$)

Br1—C4	1.898 (7)	C1—H1A	0.9300
Br2—C2	1.907 (6)	C7—C8	1.473 (12)
C6—C5	1.377 (10)	C7—H7A	0.9700
C6—C1	1.407 (10)	C7—H7B	0.9700
C6—C7	1.507 (10)	C8—C9	1.504 (12)
C3—C2	1.389 (9)	C8—H8A	0.9700
C3—C4	1.391 (8)	C8—H8B	0.9700
C3—N1	1.461 (7)	C9—C10	1.474 (15)
C5—C4	1.378 (9)	C9—H9A	0.9700
C5—H5A	0.9300	C9—H9B	0.9700
C2—C1	1.365 (9)	C10—H10A	0.9600
N1—H1B	0.8900	C10—H10B	0.9600
N1—H1C	0.8900	C10—H10C	0.9600
N1—H1D	0.8900		
C5—C6—C1	117.0 (6)	C8—C7—C6	113.8 (7)
C5—C6—C7	121.8 (7)	C8—C7—H7A	108.8
C1—C6—C7	121.2 (7)	C6—C7—H7A	108.8
C2—C3—C4	117.2 (5)	C8—C7—H7B	108.8
C2—C3—N1	122.6 (5)	C6—C7—H7B	108.8
C4—C3—N1	120.1 (6)	H7A—C7—H7B	107.7
C6—C5—C4	121.8 (7)	C7—C8—C9	116.7 (9)
C6—C5—H5A	119.1	C7—C8—H8A	108.1
C4—C5—H5A	119.1	C9—C8—H8A	108.1
C1—C2—C3	121.7 (6)	C7—C8—H8B	108.1
C1—C2—Br2	118.2 (5)	C9—C8—H8B	108.1
C3—C2—Br2	120.2 (4)	H8A—C8—H8B	107.3
C3—N1—H1B	109.5	C10—C9—C8	116.4 (10)
C3—N1—H1C	109.5	C10—C9—H9A	108.2
H1B—N1—H1C	109.5	C8—C9—H9A	108.2
C3—N1—H1D	109.5	C10—C9—H9B	108.2
H1B—N1—H1D	109.5	C8—C9—H9B	108.2
H1C—N1—H1D	109.5	H9A—C9—H9B	107.4

C5—C4—C3	121.1 (6)	C9—C10—H10A	109.5
C5—C4—Br1	119.1 (5)	C9—C10—H10B	109.5
C3—C4—Br1	119.8 (5)	H10A—C10—H10B	109.5
C2—C1—C6	121.1 (6)	C9—C10—H10C	109.5
C2—C1—H1A	119.4	H10A—C10—H10C	109.5
C6—C1—H1A	119.4	H10B—C10—H10C	109.5
C1—C6—C5—C4	2.6 (11)	C2—C3—C4—Br1	175.9 (5)
C7—C6—C5—C4	-178.4 (7)	N1—C3—C4—Br1	-5.7 (8)
C4—C3—C2—C1	3.2 (9)	C3—C2—C1—C6	-1.0 (10)
N1—C3—C2—C1	-175.1 (6)	Br2—C2—C1—C6	177.7 (5)
C4—C3—C2—Br2	-175.5 (4)	C5—C6—C1—C2	-1.9 (10)
N1—C3—C2—Br2	6.1 (8)	C7—C6—C1—C2	179.1 (7)
C6—C5—C4—C3	-0.4 (10)	C5—C6—C7—C8	-102.7 (10)
C6—C5—C4—Br1	-178.9 (5)	C1—C6—C7—C8	76.2 (11)
C2—C3—C4—C5	-2.5 (9)	C6—C7—C8—C9	175.0 (10)
N1—C3—C4—C5	175.9 (6)	C7—C8—C9—C10	-178.9 (11)

Hydrogen-bond geometry (\AA , $^\circ$)

<i>D</i> —H \cdots <i>A</i>	<i>D</i> —H	H \cdots <i>A</i>	<i>D</i> \cdots <i>A</i>	<i>D</i> —H \cdots <i>A</i>
N1—H1C \cdots Cl1 ⁱ	0.89	2.59	3.240 (5)	130
N1—H1D \cdots Cl1 ⁱⁱ	0.89	2.68	3.136 (5)	113
N1—H1C \cdots Br1 ⁱⁱⁱ	0.89	2.82	3.517 (5)	135
N1—H1B \cdots Br1	0.89	2.51	3.094 (5)	124
N1—H1B \cdots Cl1	0.89	2.72	3.212 (6)	116

Symmetry codes: (i) $-x, -y, -z$; (ii) $-x+1, -y, -z$; (iii) $x-1, y, z$.

Fig. 1

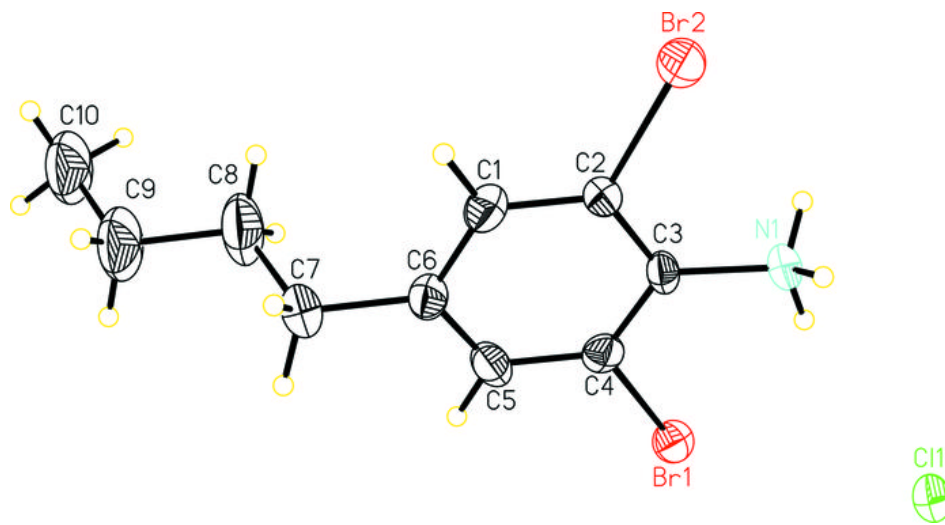


Fig. 2

